

DIVERSIFIED AIR SYSTEMS

MAXTOP™

Ceiling mounted air filtration units



- *High efficiency cartridge unit*
- *Automatic self-cleaning*
- *Source capture with MAXFLO fume arms or ambient air filtration*
- *Dust storage drawers*
- *Access doors to cartridges*

*Floor space a problem?
Look at the top...
Look at MAXTOP!*

Superior technology generating substantial operating savings

MAXTOP *Ceiling mounted air filtration units*

LET'S FACE IT! Plant managers have to maximize their floor space as much as possible. So when it comes to adding a new piece of equipment, they search for the area where it will encumber the least. The MAXTOP overhead cartridge dust collector with automatic cleaning system will eliminate the worry of finding the right place for installation. Two models with various C.F.M. capacities are offered: air-in air-out design for filtering and recirculating ambient dust laden air or flanged configuration for source capture with MAXFLO fume arms.

Industrial Air Specialists

With our headquarters in Louisville, Kentucky, Diversified Air Systems, Inc. has been providing quality air solutions to industrial and commercial facilities since 1981. During our more than twenty-nine years of operation, Diversified Air Systems has established two important company traditions: offering state-of-the-art equipment at competitive prices and achieving long-term customer satisfaction.

The staff of Diversified Air Systems includes five application engineers, with a combined experience of more than 75 years in the air filtration and HVAC industry. Whether your facility requires an air filtration system for dust, mist, or fumes, or an HVAC solution to meet ventilation needs, Diversified Air Systems has the equipment and expertise to meet the need.

Services include air quality analysis, system design, equipment sales, turnkey installation, onsite servicing, and supply of replacement filters and accessories.

Other Filtration Systems available:

Air Cleaners

Containment Booths

Decontamination Booths

Downdraft Tables

Dust Collectors

Fans and Blowers

Gas & Odor Control

High Vacuum Systems

Mist Collectors

Paint Booths

Stainless Steel Collectors

Vehicle Exhaust Systems

Wet Dust Collectors



Most of our competitors do not include these standard features :

- Spark arrestors (welding application)
- 97% at 0.05 micron efficiency
- Fully welded painted steel cabinet
- Reinforced frame
- Easy access removable dust drawers
- Low noise level

TYPICAL APPLICATIONS FOR MAXTOP FILTRATION UNITS

- Welding and grinding
- Dry dust particles
- Paper dust
- Powder mixing
- Ambient air filtration and recirculation



Removable dust storage drawers

2 or 3 arm configuration

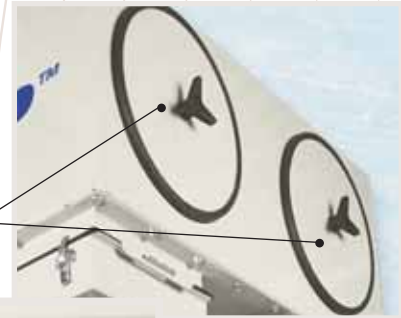


Diaphragm valves for air pulsation

Direct drive TEFC motor (2, 3 or 5 H.P.)



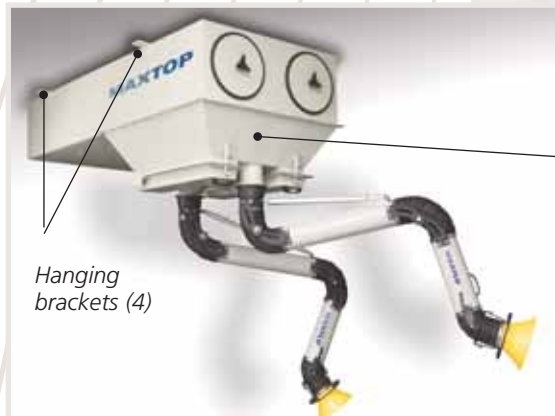
Magnehelic pressure gauge (can be remote mounted)



Removable access doors to cartridges



Intake louver for ambient air recirculation



Hanging brackets (4)

Reinforced 12 gauge painted steel cabinet



Automatic pulse cleaning control panel

DIMENSIONS

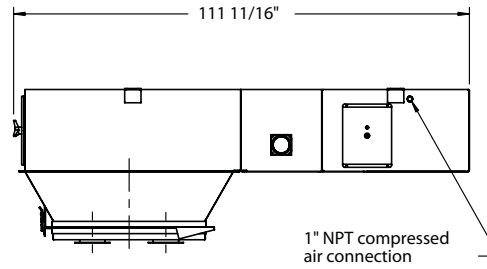
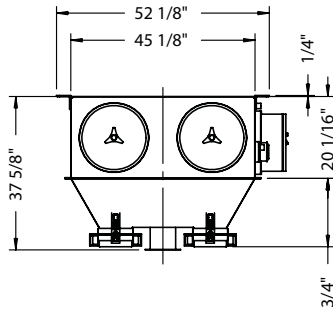


CHART 1

Model	HP / Kw	Air flow CFM / M ³	Compressed air required	No. of fume arms	Weight [lbs] / [kg]
MT-11500-2-L	2 / 1.5	2500 / 4250	0.80 SCF – 0.90 SCF	N/A (inlet louvers only)	920 / 420
MT-11500-3-L	3 / 2.2	2500 / 4250	0.80 SCF – 0.90 SCF	N/A (inlet louvers only)	920 / 420
MT-11500-3-A	3 / 2.2	1600 / 2720	0.80 SCF – 0.90 SCF	(2) 6" X10' / 160 mm X 3 m	1050 / 475
MT-13000-5-A	5 / 3.7	2500 / 4250	0.80 SCF – 0.90 SCF	(3) 6" X10' / 160 mm X 3 m	1115 / 505

CREATE YOUR MAXTOP FILTRATION UNIT SPECIFICATION

1. Automatic pulse with electronic control panel.
2. Magnehelic pressure gauge.
3. Removable access doors to cartridges.
4. 1" NPT compressed air connection
5. **MODEL TO BE :**
 - A) MT-11500-2-L (1040 sq. ft of filtration)
 - B) MT-11500-3-L (1040 sq. ft of filtration)
 - C) MT-11500-3-A (1040 sq. ft of filtration)
 - D) MT-13000-5-A (1040 sq. ft of filtration)
6. Voltage to be : 230 / 1 / 60 208/ 3 / 60
460 / 3 / 60 575 / 3 / 60
7. Unit to be equipped with aluminum fire deterrent filter for welding and grinding processes.
8. **UNIT TO BE EQUIPPED WITH :**
 - A) Two (2) MAXFLO 6" X 10' fume arms
 - B) Three (3) MAXFLO 6" X 10' fume arms
 - C) Two (2) slotted air inlets for ambient air filtration and recirculation
9. **UNIT TO BE EQUIPPED WITH :**
 - A) Manual starter with overload protection
 - B) Magnetic starter with overload protection
10. Outlet louvers for air ambient recirculation (no fume arms required)

Diversified Air Systems

10801 Electron Drive, Louisville, Kentucky 40299

Toll free : **(800) 264-8958**

Tel. : **(502) 267-0333** • Fax : **(502) 267-4241**

Website : www.diversair.com • email : info@diversair.com